

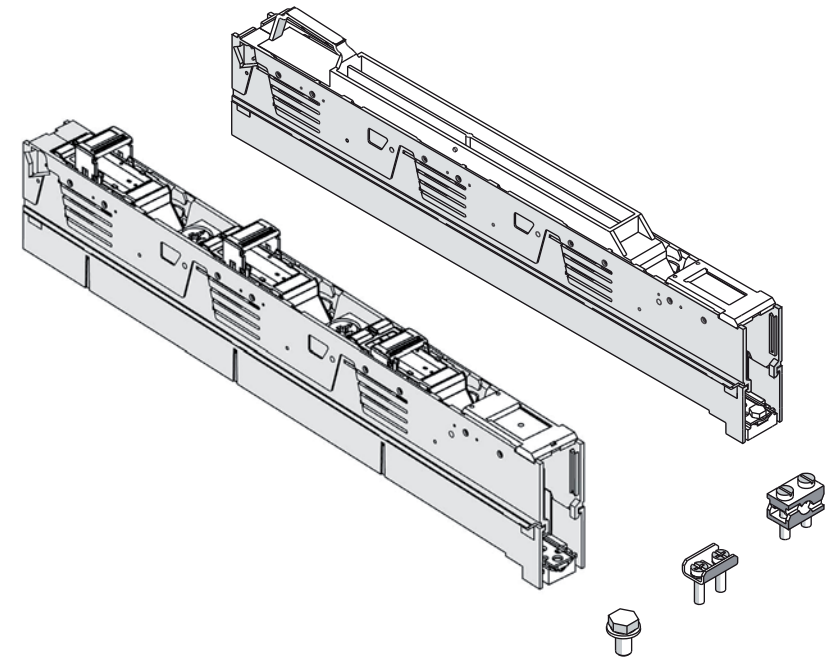
# Gebrauchsanleitung Installation Instructions

GA-L010

14513c

**CE** NH-Sicherungslastschaltleiste Gr. 00  
für 185mm Sammelschienensysteme  
ein- und dreipolig schaltbar  
LV HRC strip type fuse-switch-disconnector Size 00  
for 185mm busbar system  
1-pole and 3-pole switchable

⚡	<b>Warnung:</b>	<b>WARNING:</b>
	Gefährliche elektrische Spannung! Kann zu elektrischem Schlag und Verbrennungen führen. Vor Beginn der Arbeiten Anlage und Gerät spannungsfrei schalten.	Hazardous voltage can cause electrical shock and burns. Disconnect power before proceeding with any work on this equipment.

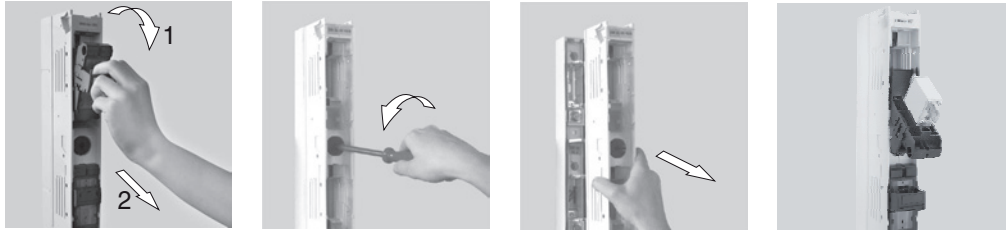


Nur Sicherungseinsätze mit versilberten Messern bzw. mit versilberten Trennlaschen verwenden!  
Use fuse-links with silver-plated terminal blades or silver-plated disconnecting links only!

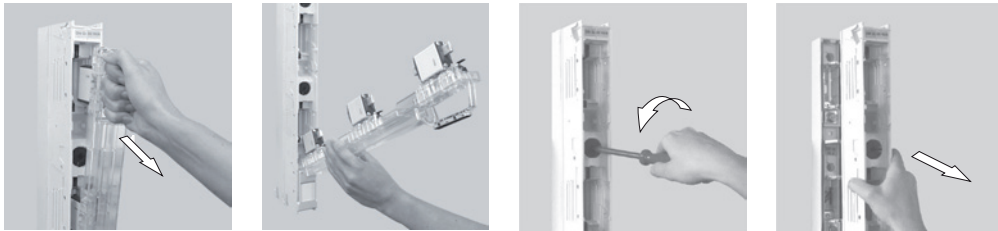


**① Demontage des Leistenoberteiles 1polig schaltbar**  
**Removing of upper section of disconnecter 1-pole switching**

**Parkstellung**  
**Park position**

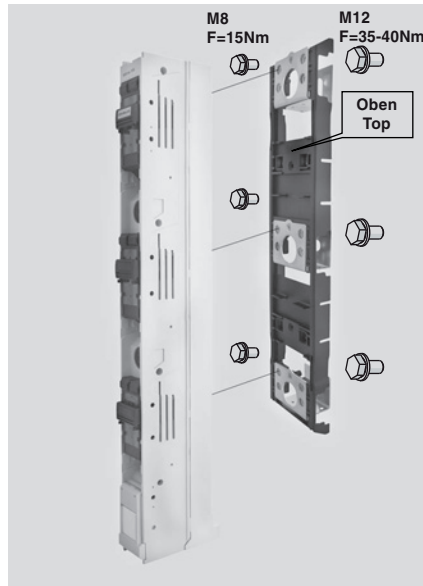
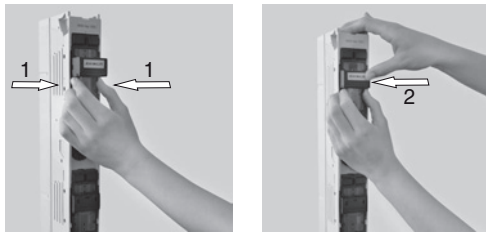


**Demontage des Leistenoberteiles 3polig schaltbar**  
**Removing of upper section of disconnecter 3-pole switching**

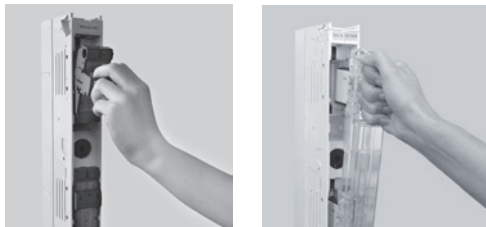


**③ Griff versenkbar**  
**Retractable handle**

**Montage auf Sammelschienenadapter**  
**Mounting on busbar adapter**

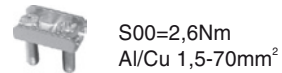
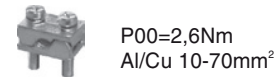
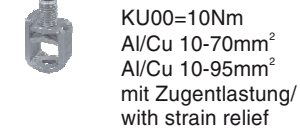
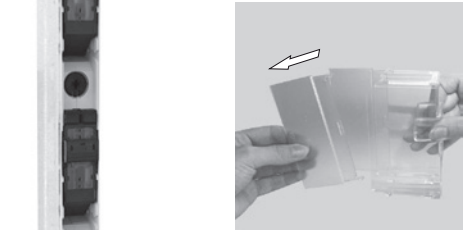
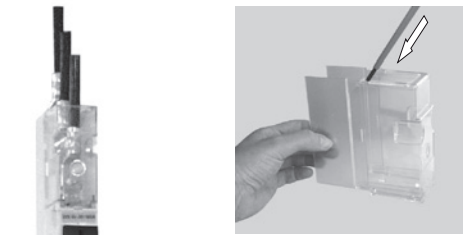
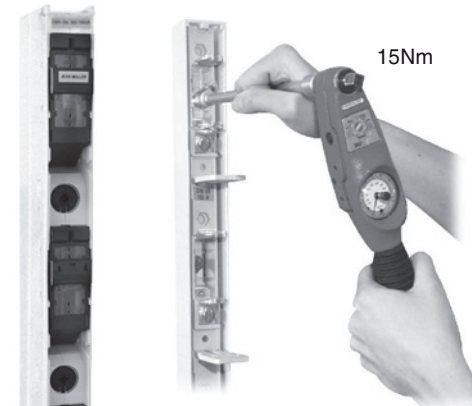


**④ Ein- und Ausschalten: schnell schalten**  
**On/Off: move lever quickly!**

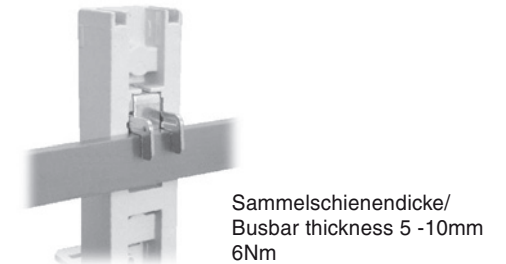


**⑥ Anschluss unten / Connection, bottom**

**⑦ Anschluss oben / Connection, top**



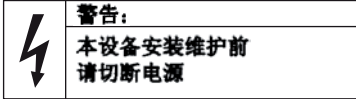
**⑧ SK-Klemme**  
**Busbar terminal**



## 安装手册

RC

低压高分断条形熔断器隔离开关 00号  
用于185mm母排系统  
单极和三极操作



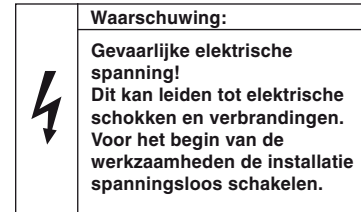
注意开关与母排连接的螺钉的紧固  
(见第3页, 螺钉紧固力矩)  
开关内只能使用触刀镀银的熔断器或隔离刀片

- ① 移除开关上体 (单极操作开关)
- ② 移除开关上体 (三极操作开关)
- ③ 可回缩手柄
- ④ 分/合: 快分快合
- ⑤ 检修位置
- ⑥ 下进线
- ⑦ 上进线
- ⑧ 母排挂接件 母排厚度/5 - 10mm/6Nm
- ⑨ 尺寸

## Montage instructies

NL

Zekeringlastscheider DIN00  
voor 185mm railsysteem  
één- en drie polig schakelbaar



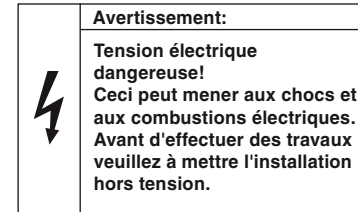
! Alleen meszekeringen gebruiken met verzilverde messen resp. met verzilverde scheidingsmessen.

- ① Demontage bovendeeel zekeringlastscheider 1 polig schakelbaar
- ② Demontage bovendeeel zekeringlastscheider 3 polig schakelbaar
- ③ Handgreep verzinkbaar
- ④ In- en uitschakelen: snel schakelen
- ⑤ Parkeerpositie
- ⑥ Aansluiting onder
- ⑦ Aansluiting boven
- ⑧ ophaakklem type SK  
Dikte railsysteem/5 - 10mm 6Nm
- ⑨ Afmetingen

## Notice d'installation

F

Réglette porte-fusible  
sectionnable Taille 00 à  
entraxe 185mm, à 1- ou 3 pôles  
commutés



! Utiliser uniquement des fusibles à couteaux ou barrettes de neutre argentés.

- ① Démontage du capot sectionnable à 1 pôle commuté
- ② Démontage du capot sectionnable à 3 pôles commutés
- ③ Poignée escamotable
- ④ Enclencher et déclencher: tirer d'un coup sec
- ⑤ Position de repos de la manette (Parqué)
- ⑥ Raccordement par le bas
- ⑦ Raccordement par le haut
- ⑧ Etrier de serrage type SK, pour jeu de barres épaisseur de 5 à 10mm, 6Nm
- ⑨ Dimensions